

Basic equipment configuration: Filling machine; Type Eurofüller



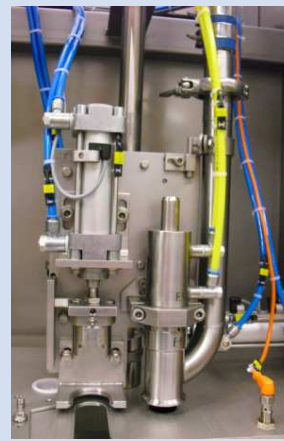
Production



CIP – adapter



Distribution cabinet



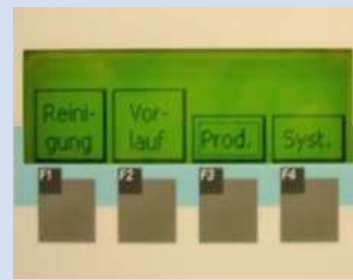
Filling chamber



Rolling conveyer



IDM



Operating panel



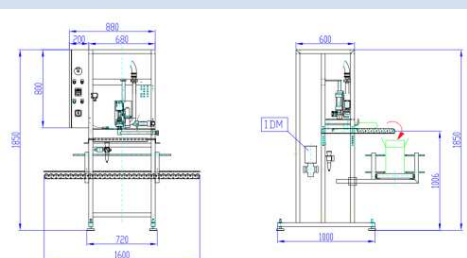
Standard sealing systems

Performance: 3 litre up to 360 bags/hour
5 litre up to 300 bags/hour
10 litre up to 240 bags/hour

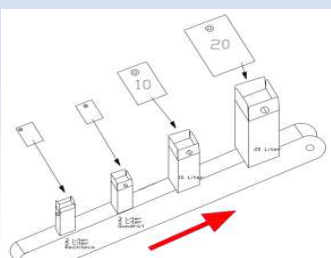
Technical Data Filling range: 3 ... 20 litres
Compressed air pressure: 6 bar (Festo-components)
Voltage/power: 230V (50Hz)/ 16A
Control voltage: 24V

- Can be used to process nearly all liquids
- Robust stainless steel construction
- High-quality equipment components (Siemens, Festo)
- Good operability

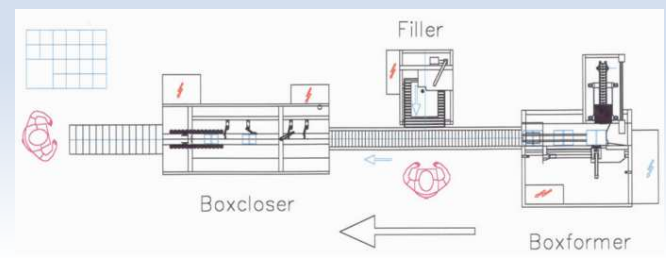
- Pre-settable program modes (CIP, forward running, production, maintenance)
- Maintenance friendly design allowing good accessibility
- The machine conforms to EC Machinery Directive 2006/42/EC



Dimensions L/B/H: 1500/1600/2000



Cartons for 3, 5, 10 und 20 litres



Assembly suggestion with Eurofüller